

Erasmus+

EU programme for education, training, youth and sport

Launch of the OneHealthWatch online platform

*A key venue for innovative training courses
and networking exchanges to support all
players in wastewater-based epidemiology.*

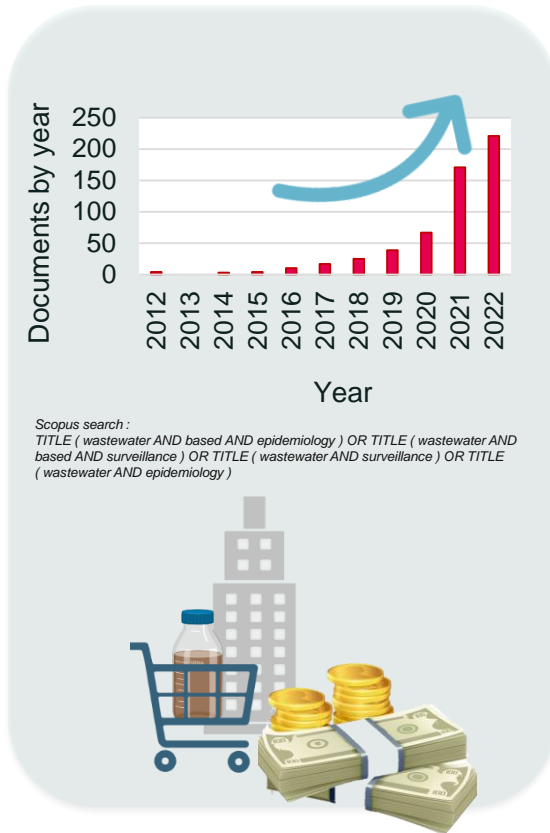
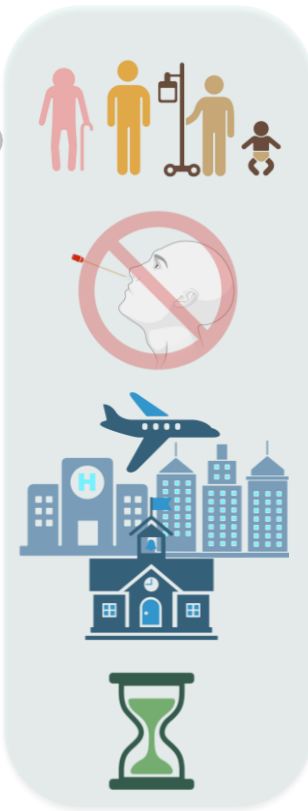
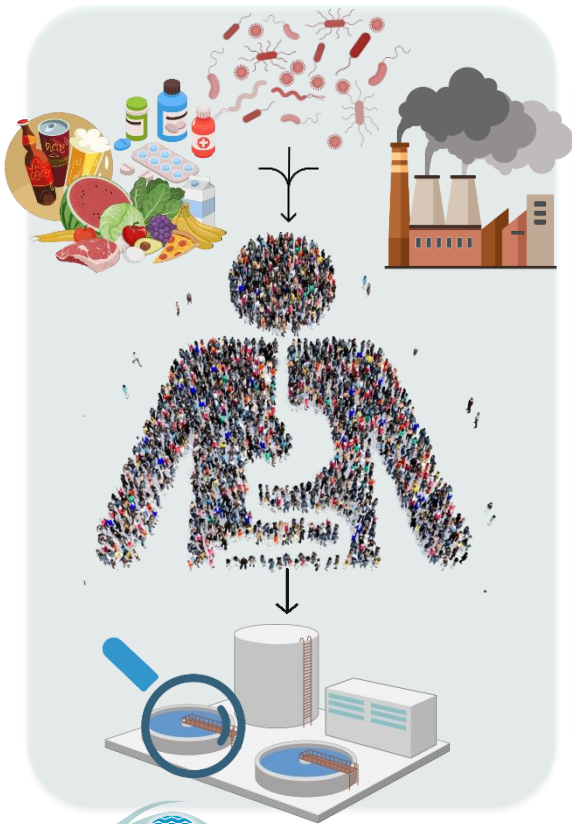
Blandine Fauvel

Image adapted from pch.vector on Freepik

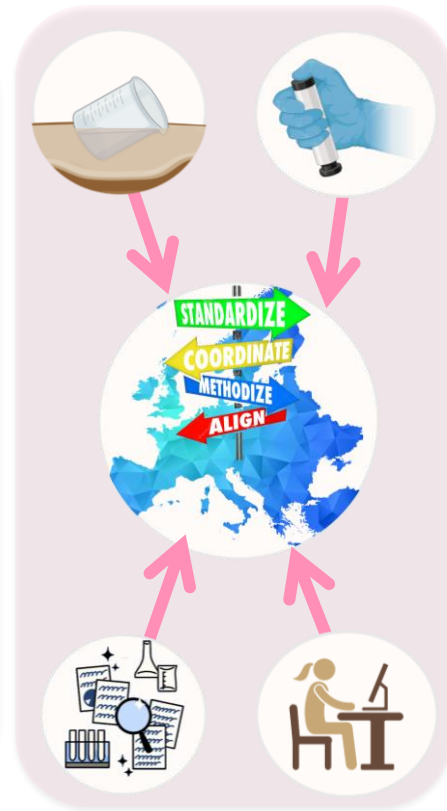
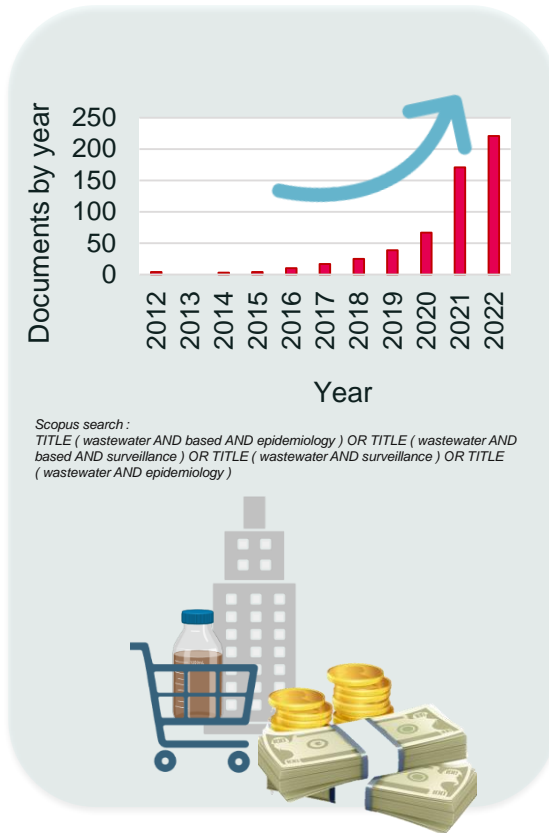
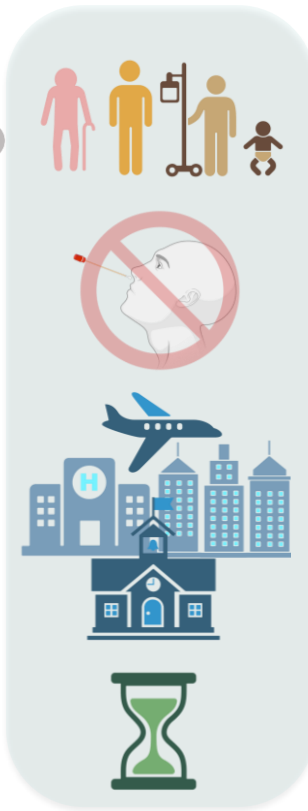
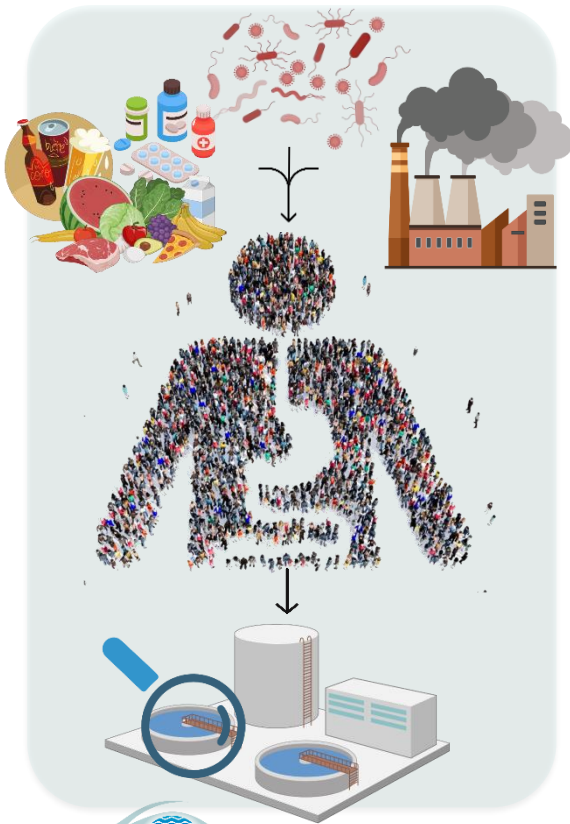
A training on wastewater surveillance, why?



A training on wastewater surveillance, why?

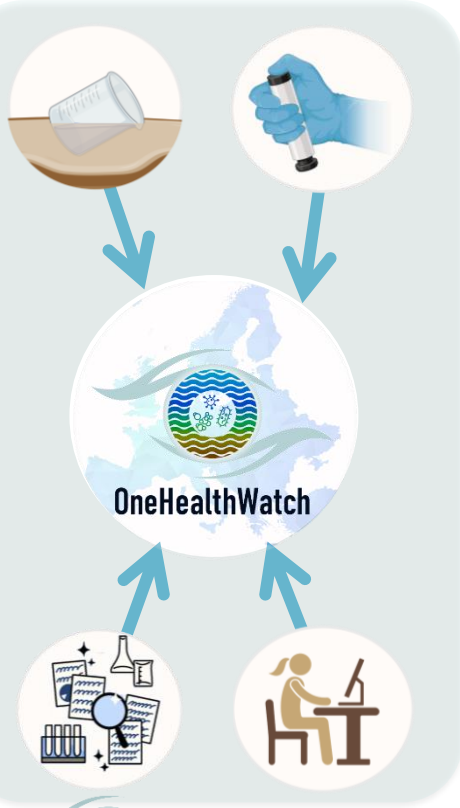


A training on wastewater surveillance, why?



Onehealthwatch objectives

- Develop an **interactive online platform** centralising specific **training modules** on wastewater surveillance



Onehealthwatch objectives



- Develop an **interactive online platform** centralising specific **training modules** on wastewater surveillance



- Contribute to the emergence of a One Health surveillance system through the promotion of harmonized, informative, and educational contents

Onehealthwatch objectives



- Develop an **interactive online platform** centralising specific **training modules** on wastewater surveillance



- Contribute to the emergence of a One Health surveillance system through the promotion of harmonized, informative, and educational contents

For who?



Professionals
working in the field
of wastewater



Health
professionals



General
public

Onehealthwatch objectives



- Develop an **interactive online platform** centralising specific **training modules** on wastewater surveillance



- Contribute to the emergence of a One Health surveillance system through the promotion of harmonized, informative, and educational contents

For who?



Professionals
working in the field
of wastewater



Health
professionals



General
public

3 institutions

eurecat!

Aquafin

LUXEMBOURG
INSTITUTE OF SCIENCE
AND TECHNOLOGY

LIST



Platform onehealthwatch



Ad-hoc guidance

Wastewater sampling of aircrafts for SARS-CoV-2 surveillance

A guidance document for Member States

Status 09 Jan 2023

David Ditz, Victor Gili, Albert de Wit, Barbara G. Kneibitzer, M. Bontempo, L. Luchini, S. Mendis, Thomas C. Luchini

2023



9

OneHealthWatch: All courses

https://onehealthwatch.eurecatcademy.org/course/

Home Courses catalogue Project description Consortium Contact Log in

Courses catalogue

Courses > Courses catalogue

Courses catalogue Search courses

To access the training catalogue, registration on the OneHealthWatch Training Platform is required.

[Click here to register](#)

Courses catalogue

Aircraft wastewater sampling for SARS-CoV-2 surveillance

Contact us

Contact site support

You are not logged in. (Log in)

Get the mobile app

GET IT ON Google

Scan for access to the platform!



Planned training modules

- 1 Introduction to the monitoring of contaminants in wastewater
- 2 Theoretical knowledge about epidemiology
- 3 Practical knowledge about wastewater sampling and analysis
- 4 General safety and biosafety aspects of working with wastewater
- 5 Interpreting and communicating data with ethical awareness

April 2024



Learning pathway

Beginners' level



Advanced level



Beta-testers

- Wastewater operators
- Epidemiologists
- Scientists
- Neophytes



Operational platform

- Training catalogue
- Networking exchange



example of course available on the platform

Who hasn't had to follow a boring training course?



Share and adapt scientific, reliable, accurate and up-to-date content in a didactic way



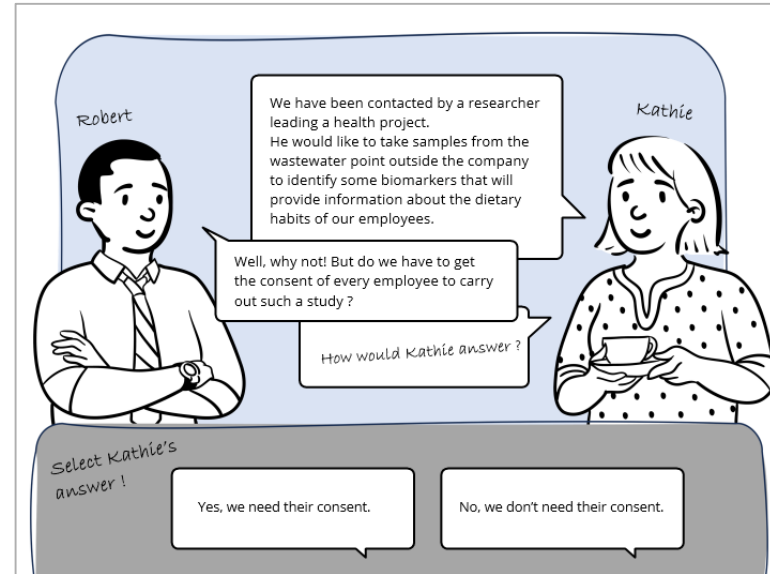
example of course available on the platform

Who hasn't had to follow a boring training course?



A variety of interactive content to keep the learner focused

Dialogue scenario



example of course available on the platform

Who hasn't had to follow a boring training course?

Ethical considerations to know in wastewater monitoring

Is someone's wastewater still their property when they flush the toilet?



A variety of interactive content to keep the learner focused

Drag and drop exercises


Equity

First, do you know the difference between **equity** and **equality** ?


Let's play a quick game.
A pair of ice skates has been given to Julie and her father.
Which cabinet illustrates equity and which illustrates equality?


Drag and drop into the correct cabinet

Equity



Equality







Your input is valuable

Scan for
access to
the survey!



Your input is valuable

Scan for
access to
the survey !



Erasmus+

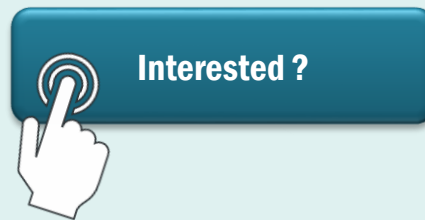


Aquafin

eurecat

LUXEMBOURG
INSTITUTE OF SCIENCE
AND TECHNOLOGY

LIST 



onehealthwatch@list.lu

Online training courses in EU-WISH

Work package 4: Sustainability and capacity building

T4.5 Establishment and deployment of online training module (task leader: LIST)

Development of online training resources based on one-off investment with long-term benefits and the ability to reach a wide audience, especially those in developing countries.

The content of the platform will depend on the final outcome of the different WPs.

